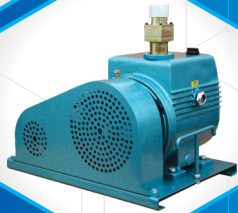
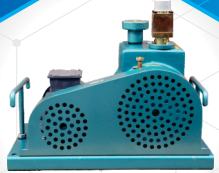
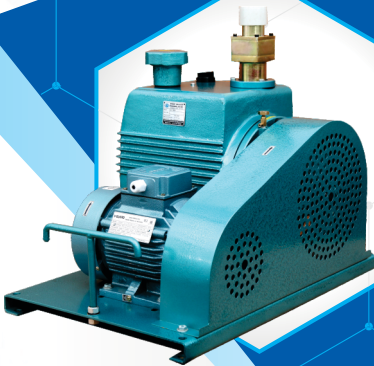




SPACE VACUUM
TECHNOLOGIES



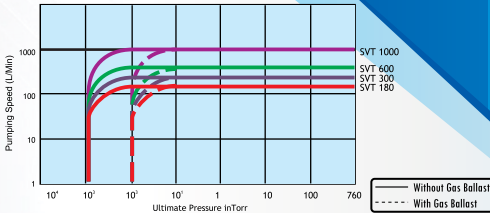
**Oil Sealed
Rotary Vane
Vacuum Pump**

Technical Data

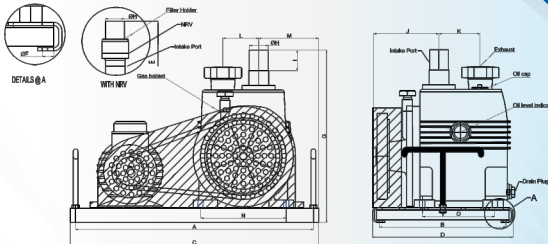
Model		Unit	SVT 180	SVT 300	SVT 600	SVT 1000
Displacement 50 Hz		L/min	180	300	600	1000
Ultimate Pressure	with Gas Ballast *	torr	$< 1 \times 10^{-2}$			
	Without Gas Ballast*	torr	$< 1 \times 10^{-3}$			
Inlet Port		mm	Ø 32	Ø 32	Ø 46	Ø 50
Exhaust Port		--	PF 1"	PF 1"	PF 1 ½"	BSP 1 ½"
Motor Power 3Ø		kW	0.4	0.75	0.75	1.5
Rotational Speed		RPM	600			
Oil Capacity		Liter	2	2.5	4	6.5
Weight Including Motor		kg	55	65	85	140

* Under specified test conditions

Performance Curve



Space Vacuum Technologies SVT Series



MEASUREMENTS

SERIES	A	B	C	D	E	ØF	G	ØH	I	J	K	L	M	N	O
SVT 180	455	255	485	285	346	14	363	32	90	120	90	59	112	170	140
SVT 300	515	280	545	310	394	14	343	32	27	146	100	70	125	160	150
SVT 600	584	310	610	345	446	14	422	46	50	175	110	85	147	210	178
SVT1000	610	385	640	425	524	14	503	50	50	190	140	103	167	248	165



No.18, RAMMANNA NAGAR, THADAGAM ROAD
 EDAYARPALAYAM, COIMBATORE - 641 025
 TAMIL NADU, INDIA.

spacevacuumtechnologies@gmail.com
 Call Us: +91 9539 33 66 66.
 www.spacevacuumtechnologies.com